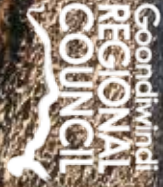


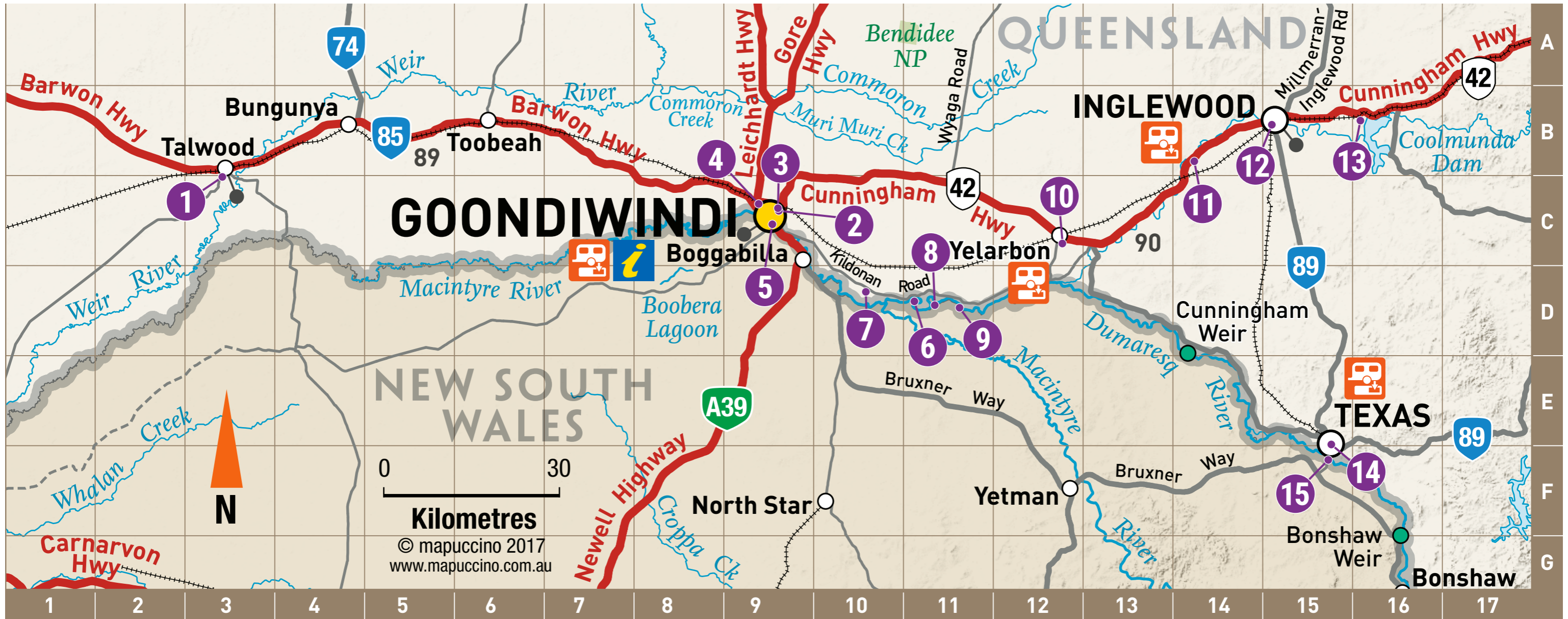
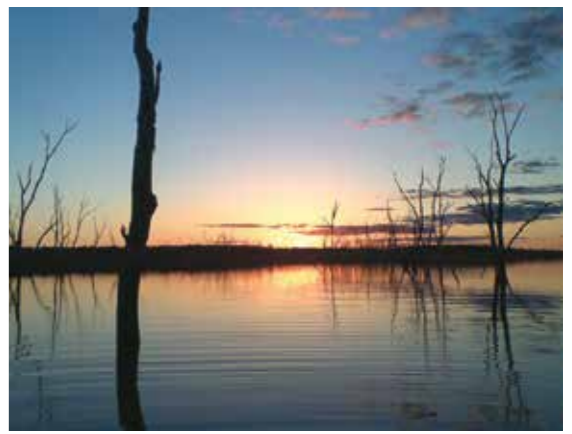
Goondiwindi Region Caravan & Camping



Amenities within the region

Tent Area	Swimming
Camper Trailer Accessible	Fishing
RV / Motorhome Accessible	24 Hour Limit
Off Road Caravans Only	48 Hour Limit
Big Rig / Bus Accessible	72 Hour Limit
Cost	14 Day Limit
Free	Tables
Donation	Barbeques
Power Available	Bins
Toilets	Laundry
Disabled Access	Dump Spot Onsite
Showers	Good TV Reception
Drinking Water	Telstra Reception
Dogs Allowed	Cabins / Accommodation

No.	Address	How to get there/ Description	Amenities
Caravan Parks			
2	Goondiwindi Holiday Park 36 Old Cunningham Hwy, Goondiwindi Ph: 1300 725 915	Goondiwindi Holiday Park welcomes business travellers, holidaymakers and tourists alike to our immaculate and spacious 13-acre site. Catering for a full range of accommodation options, from the basic tent sites, a variety of RVs including large motorhomes, and fully self-contained accommodation.	
4	Goondiwindi Tourist Park 20 Hungerford Street, Goondiwindi Ph: 07 4671 2566	Enjoy 10 spacious parkland acres. Secure, clean & tidy. Hand feed our ducks & possums at our attractive billabong. Saturday pancake breakfast. Personalised & friendly. Wireless internet. This park is a part of the Top Tourist Parks Network, an Australia-wide network of holiday parks and accommodation.	
3	Goondiwindi Showgrounds Boundary Road, Goondiwindi Ph: 0437 809 415	Great stop to pull up at, with so much space. Very clean/spotless amenities, new power boxes and sullage recently installed, private dump point onsite. Most sites are grassed and there is plenty of room for drive through and large rigs. Not far from town, and friendly caretaker. Represents great value for money.	
5	Rivergums Caravan Park 1-5 DeLacy Street, Goondiwindi Ph: 0457 001 743	Rivergums Caravan Park is the only park in the centre of the town of Goondiwindi and is less than 50 metres away from the pleasant McIntyre River. We are a quiet, relaxed family park, set in an idyllic residential area alongside the river away from highway and railway noise. We are a 5-10 minute stroll along the river walkway to tourist attractions, local shops, pubs, cafes, restaurants and supermarkets.	
13	Lake Coolmunda Caravan Park & Camping Grounds Lake Coolmunda, Inglewood Ph: 07 4652 4171	Lake Coolmunda Caravan Parks QLD - All water sports including skiing, paraflying, sailing, canoeing, fishing, sun baking. Also bird-watching, hiking, lovely sunrise, sunset or stars. Our park has a swimming pool, tennis court, BBQ, camp oven fire, fire drum, camp kitchen, full amenity block. Camping areas with fire drums and BBQ. The Park is located 13km east of Inglewood, just off the Cunningham Highway.	
12	Spur-H Caravan Park 77 George Street, Inglewood Ph: 07 4652 1407	There are 28 powered and 4 unpowered sites available for caravans, campers and motorhomes. On site accommodation is also available.	
14	Southern Border Accommodation Park 2 Avon Street, Texas Ph: 0427 359 050	It's a small park, facilities are basic and clean, the people are friendly and it isn't expensive. What's not to like!	
Community Managed Facilities			
1	Talwood Recreation Grounds Recreation Street, North Talwood	Talwood is 91km West of Goondiwindi, or 65km East of Nindigully just off the Barwon Highway. Take any exit from the Highway and in Main Street turn South down Railway Street near the Post Office. At the end keep right and the camping area is on the left.	
10	Yelarbon Recreation Grounds Wyemo Street, Yelarbon Ph: 0400 018 897	Located on the beautiful lagoon, the very popular spot has hot showers, toilets and powered sites. From the Cunningham Highway Wyemo Street goes off to the South opposite the Silos, just after the long left hander if coming from Inglewood, or just before the long right hander if coming from Goondiwindi.	
Camping Reserves			
6	Yellowbank Reserve Kildonan Road, Yelarbon	At the Cunningham Highway/Marshall St/Kildonan Rd roundabout in Goondiwindi, take the Kildonan Rd exit to Yelarbon then at 25.3km from the roundabout turn right into the access road. Definitely dry weather only. Great for fishing and camping.	
7	Rainbow Reserve Kildonan Road, Kurumbul	At the Cunningham Highway/Marshall St/Kildonan Rd roundabout in Goondiwindi, take the Kildonan Rd exit to Yelarbon. 17km from the roundabout the road nears to within 50m of the lagoon, at this point just before the turnoff onto Eukabilla Rd (to the left/North) is a dirt road on the right. Definitely dry weather only. There is a dirt boat ramp which handles most tinnies, and a great spot for fishing and swimming.	
8	Lees Reserve Kildonan Road, Yelarbon	At the Cunningham Highway/Marshall St/Kildonan Rd roundabout in Goondiwindi, take the Kildonan Rd exit to Yelarbon then at 29.6km from the roundabout turn right into the access road and follow this to the river. Definitely dry weather only. There is a rock bar across the river that forms a perfect fishing and swimming spot. Depending on the water level there can be a series of rapids.	
9	Bengalla Reserve Kildonan Road, Yelarbon	At the Cunningham Highway/Marshall St/Kildonan Rd roundabout in Goondiwindi, take the Kildonan Rd exit to Yelarbon then at 32.6km from the roundabout turn right into the access road and follow this to the river bank. Definitely dry weather only. Large reserve with plenty of room.	
11	Whetstone Rest Area Cunningham Highway, Whetstone	Located on the Cunningham Highway, 26km NE of Yelarbon, and 13km SW of Inglewood. This is a rest stop on the highway, with bitumen, and a shady area.	
15	Texas Dumaresq River Rest Area Dumaresq Crossing Road, Texas	2km South of Texas, you turn off the Texas Road, turn onto the Dumaresq Crossing Road. Good grassy sites everywhere in addition to cool, shallow clear water with a stony bottom welcome campers to a variety of nooks and crannies to set up in. Keen fishermen should try the deep fishing holes near the bridge.	



Locations & GPS Co-ordinates

1 Talwood Recreation Grounds -28.486936, 149.467889	6 Yellowbank Reserve -28.655282, 150.529409	11 Whetstone Rest Area -28.465727, 150.958786
2 Goondiwindi Holiday Park -28.532799, 150.321465	7 Rainbow Reserve -28.642425, 150.454971	12 Spur-H Caravan Park -28.416217, 151.077723
3 Goondiwindi Showgrounds -28.529251, 150.320192	8 Lees Reserve -28.660438, 150.560711	13 Lake Coolmunda Caravan Park & Camping Grounds -28.410617, 151.213603
4 Goondiwindi Tourist Park -28.523429, 150.290528	9 Bengalla Reserve -28.663946, 150.598663	14 Southern Border Accommodation Park -28.848591, 151.168952
5 Rivergums Caravan Park -28.551003, 150.311582	10 Yelarbon Recreation Grounds -28.577113, 150.756580	15 Texas Dumaresq River Rest Area -28.869414, 151.164283

Caravan Programs

Inglewood: RV Friendly Town
Texas: RV Friendly Town
Goondiwindi: RV Friendly Town
Talwood: RV Friendly Destination



Goondiwindi Regional Visitor Information Centre
 Ph: 07 4671 7474
 45 Bowen Street, Goondiwindi
 Caravan parking available on Bowen Street
 Open Monday to Friday and Saturday mornings

Inglewood Visitor Information Centre
 Albert Street, Inglewood
 Open Monday to Friday

Texas Visitor Information Centre
 High Street, Texas, next to newsagent
 Open Monday to Friday